

TRANSPORTATION PLANNERS AND ENGINEERS

bunt
& associates



Granville Island 2040 More Walkable **AND EVEN MORE VIBRANT**

Presented by: Peter Joyce
September 20th 2017

Granville Island 2040: Bridging Past & Future

A Vision for the Future of Granville Island

Granville Island 2040 is a planning project commissioned by Canada Mortgage and Housing Corporation (CMHC) to produce a comprehensive vision for Granville Island for the next quarter century.



Granville Island 2040: Bridging Past & Future

A Vision for the Future of Granville Island

Transportation Plan



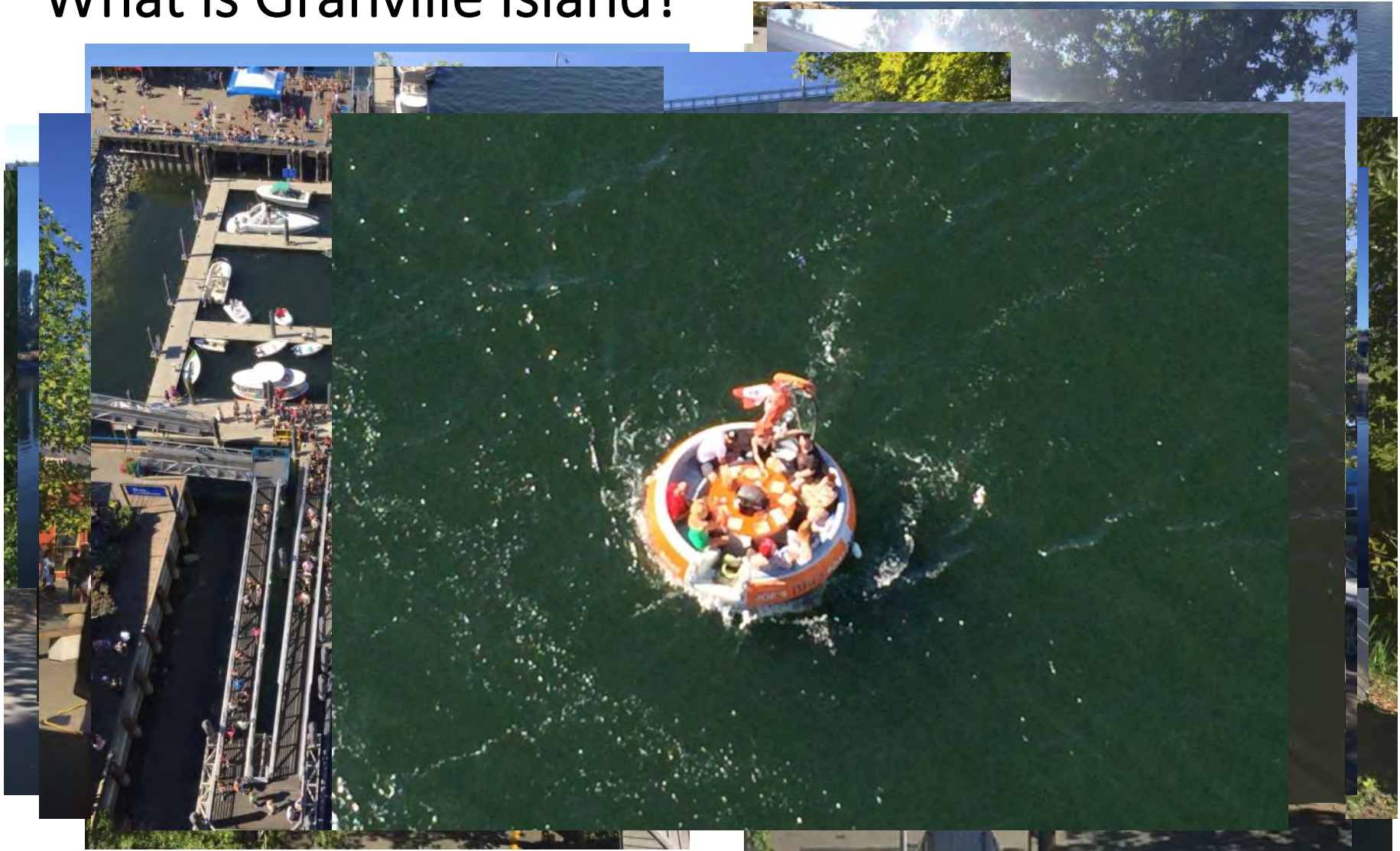
Sebastian Lippa – CMHC Granville Island
Peter Joyce – Bunt & Associates
Thea Wilson – Bunt & Associates
Simon Mueller – City of Vancouver
Tim Barton – City of Vancouver

What is Granville Island?

- 38 acre reclaimed former industrial land
- thriving public market, hotel, artisan shops and workspaces, kids market, water park, retail shops, restaurants, performing and visual arts studios and performance spaces, marina and marine services, buskers....
- one of the region's most popular destinations
- over 10.5 million visitors annually



What is Granville Island?



Granville Island 2040: Bridging Past & Future

A Vision for the Future of Granville Island

Four key strategies identified:

1. Improve Access
2. Expand the Public Market & Create a Market District
3. Embrace Arts & Innovation
4. Restore & Sustain the Public Realm

<http://granvilleisland2040.ca>

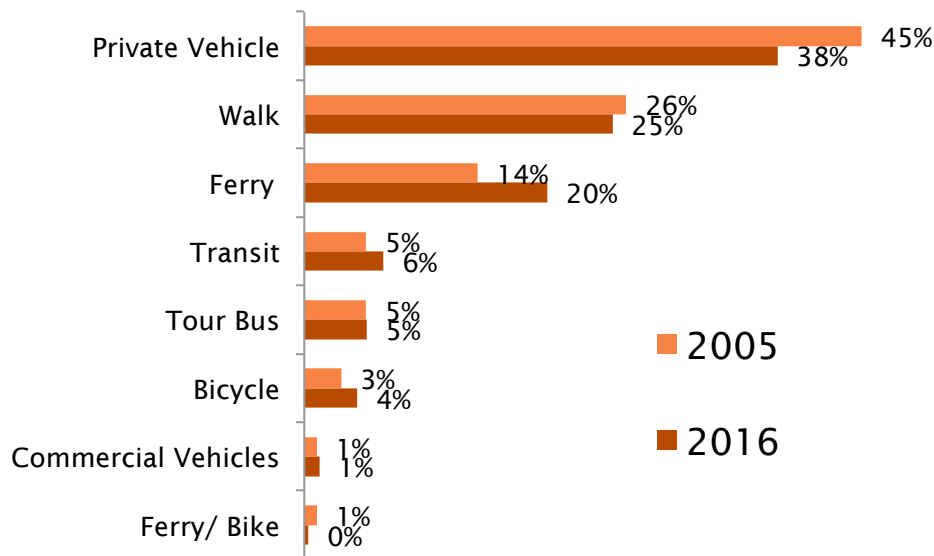


REVIEW OF EXISTING CONDITIONS

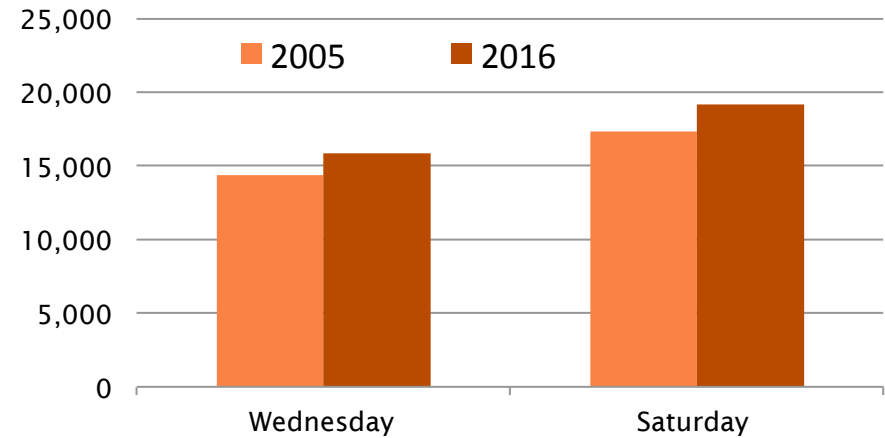


GRANVILLE ISLAND TRIP PATTERNS

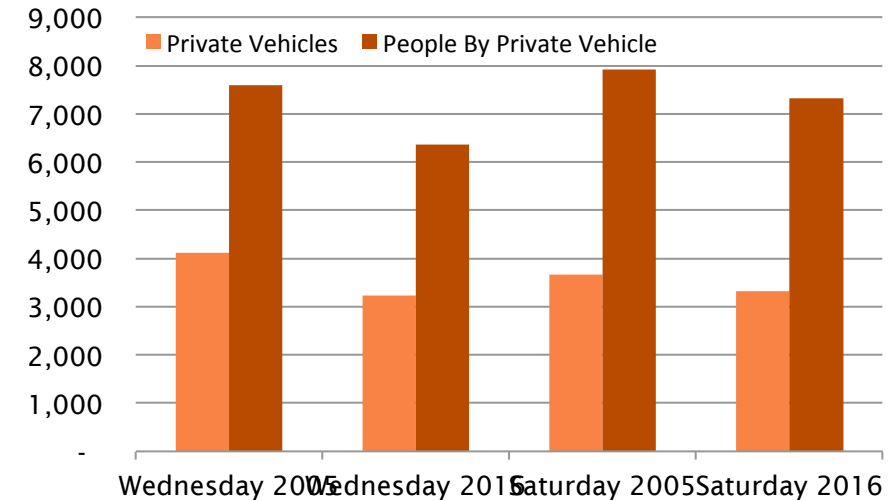
Weekend Mode Share



Number of Visitors to the Island



Arrivals by Vehicle



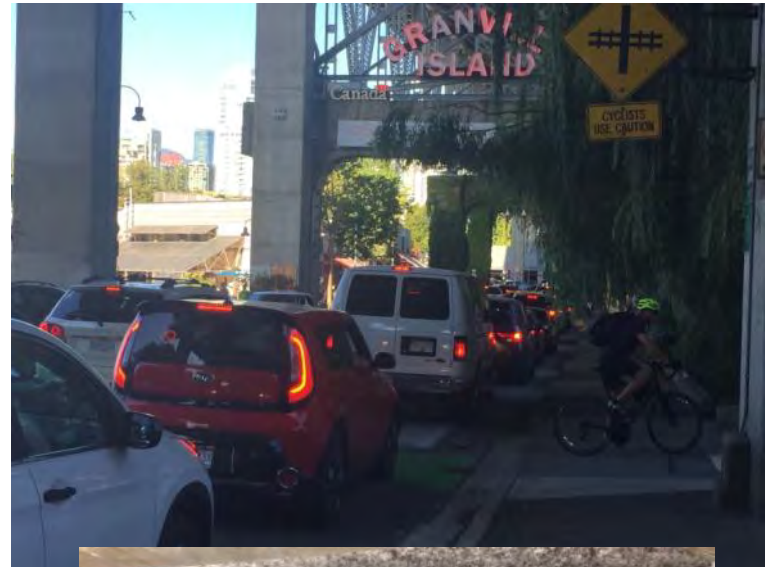
PARKING

20% of Granville Island land area devoted to parking

1,310 parking stalls

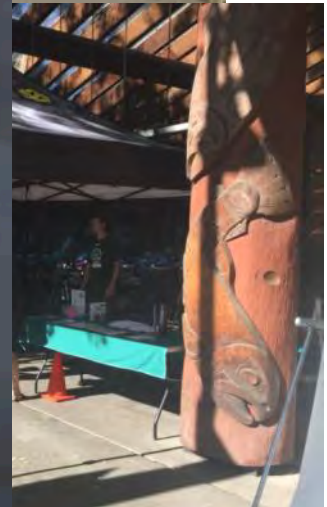


Some challenges....



Only one road on and off the Island

Some challenges....



Safety and security (bike theft) for cyclists

Some challenges....



East end of Granville Island seems distant from the heavily travelled False Creek Seawall

Some challenges....



No connection for pedestrians and cyclists to the Granville Bridge directly above



Further considerations:

- 6,800 people live within a 15 minute walk of Granville Island
- 215,000 people live within a 15 minute bike ride of Granville Island
- Most people stay between 1-3 hours and visit 3x per year or less
- People who walk/cycle to Granville Island stay a shorter length of time but they also come more frequently
- Tourist related activities are the most popular reason for visiting, although over one-quarter of visits originate from the City of Vancouver
- Presently 40% of people arrive to Granville Island by private auto, down from 50% just over a decade ago
- People arriving by passenger ferry accounts for 20% of trips, up from 14% a decade ago
- Percentage of walking, cyclist and transit trips have only improved slightly



ENGAGEMENT & CONSULTATION SUMMARY

Transportation Workshop

- Direct connections from Granville Bridge
- Reactivation of the streetcar
- New pedestrian bridge across Alder Bay
- Prioritization of walking and cycling and significantly reducing cars
- No more free parking



Charrette #1: Site Specific Visioning & Brainstorming

Big Ideas Fair

Charrette #2: Big Ideas & Site Visioning

Emerging Vision Open House and Q & A Session

City of Vancouver transportation planning...

The concept, looking north— using the centre two lanes of the bridge (courtesy of City of Vancouver 2040 Draft Transportation Plan)



Granville Bridge Greenway



City of Vancouver transportation planning...

(courtesy of City of Vancouver 2040 Draft Transportation Plan)



Arbutus Greenway



TRANSPORTATION PLAN RECOMMENDATIONS



TRANSFORMATIVE PROJECT – GRANVILLE ISLAND ELEVATOR



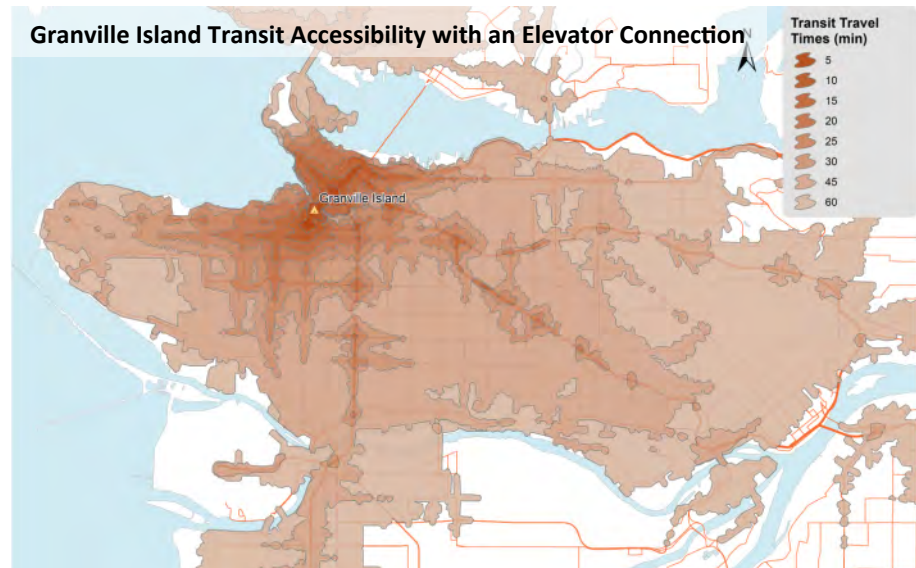
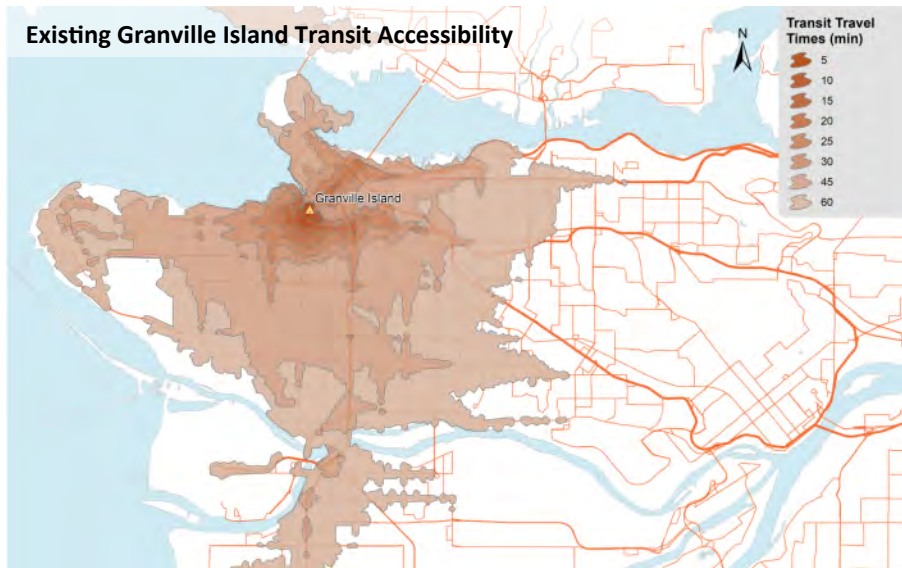
Courtesy CMHC





TRANSFORMATIVE PROJECT – GRANVILLE ISLAND ELEVATOR

- About 200,000 additional people within a 30 minute transit trip, 10,000 within a 15 minute walk, and about 9,000 within a 15 minute bike ride.
- Encourage up to 2,000 new trips.
- About 5,000 users on a typical summer noon period.
- Potential for additional multimodal use (bike share station, passenger loading, etc)





TRANSFORMATIVE PROJECT – ALDER BAY ACTIVE BRIDGE



Courtesy CMHC





TRANSFORMATIVE PROJECT – ALDER BAY ACTIVE BRIDGE

- About 1,300 additional people would be within a 30 minute walk.
- About 3,000 pedestrians and cyclists during a typical summer noon period on opening day.
- Connect to Southeast False Creek and Olympic Village areas: 12,000 – 16,000 people by 2020.
- Activate the southeast portion of Granville Island while respecting the more tranquil park areas.





ADDITIONAL INFRASTRUCTURE PROJECTS

Shuttle Bus Service

- Requires high level of service (10 minute headway, 12 hours per day).
- Oriented toward groups, families, elderly.

Anderson Street 'Complete Street'

- Provides car light statement; pilot project opportunity.
- Integrate with Elevator Plaza; provide bicycle facilities.

Arbutus Greenway Connections

- Limited opportunity currently, potential wayfinding.

Vancouver Streetcar

- Focus on shuttle bus, and remain active stakeholder.

Seawall Extensions

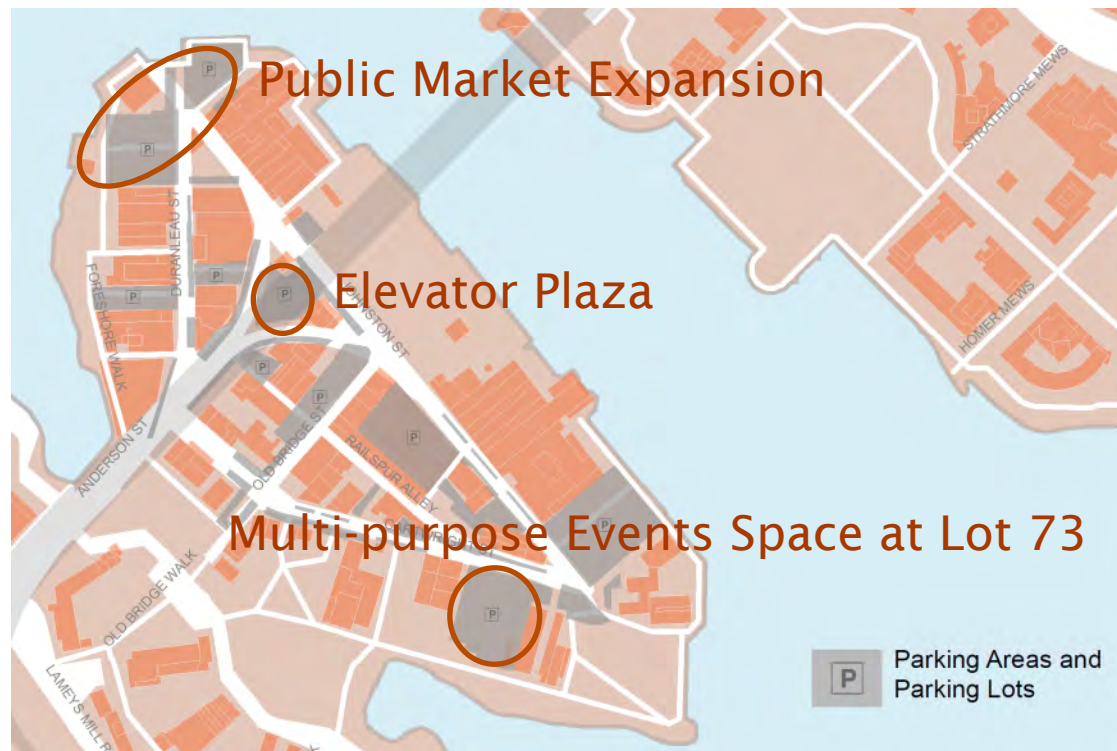
- Explore opportunities over time.



LAND USE EFFECTS

Attract about 1,400 additional trips

Repurpose about 400 parking spaces over the next 20 years



To this.....

From this....

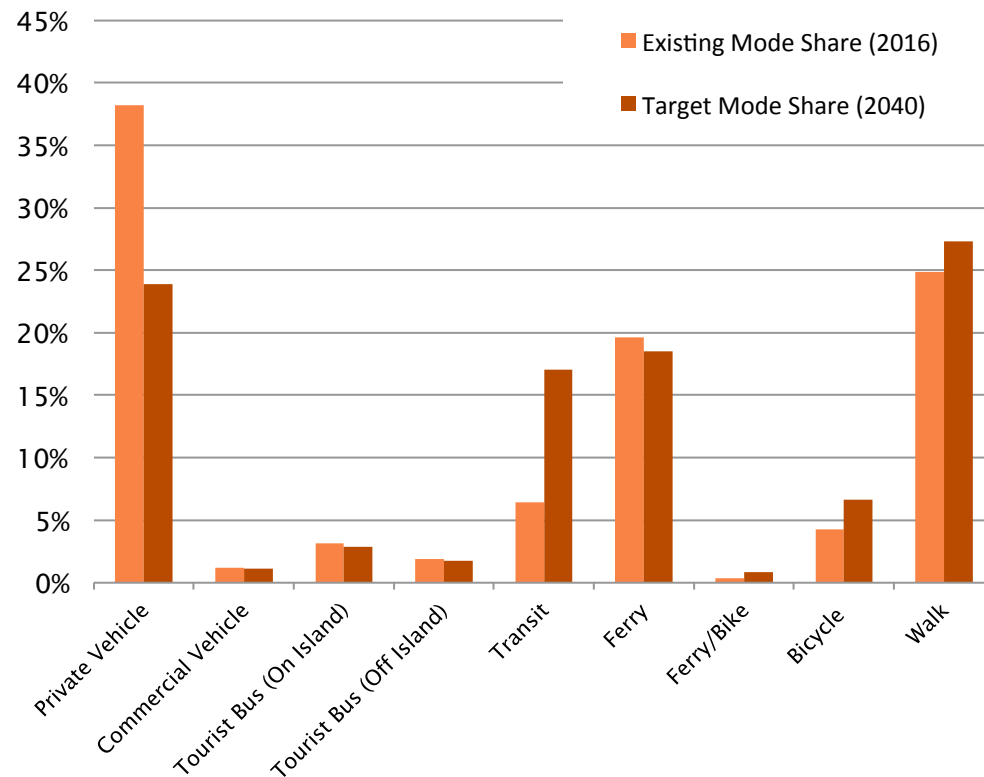




FUTURE TRIP PATTERNS

With the **transportation** and **land use** improvements, the overall amount of **visitors** to Granville Island is anticipated to **increase**, despite a reduction in parking supply.

Increase of visitors between
4% to 17%





THANK YOU